

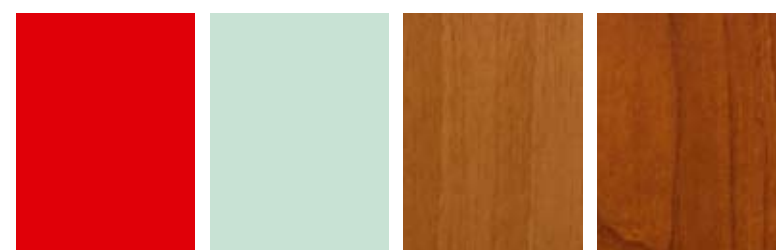
## CABINA MOD. GIOVE

### Rivestimenti

#### Laminato

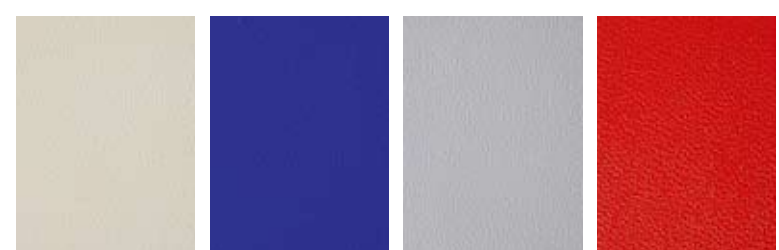


Cod. LP01    Cod. LP02    Cod. LP03    Cod. LP04



Cod. LP05    Cod. LP06    Cod. LP07    Cod. LP08

#### Plalam



Cod. PLM01    Cod. PLM02    Cod. PLM03    Cod. PLM04



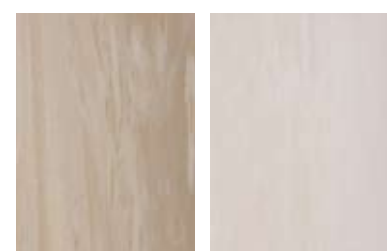
Cod. PLM05 - Similinox

### Pavimenti

#### Vinilico



Cod. V540    Cod. V543    Cod. V544    Cod. V547



Cod. V549    Cod. V555

Siem S.r.l.  
Via Trento, 64 - 20059 Vimercate (MI)  
T. (+39) 039 6026214  
F. (+39) 039 6026246  
[www.siemascensori.it](http://www.siemascensori.it)  
[siem@siemascensori.it](mailto:siem@siemascensori.it)

Numero Verde  
**800-375 301**

INTESTA



Finiture e colori



## CABINA MOD. URANO

### Rivestimenti

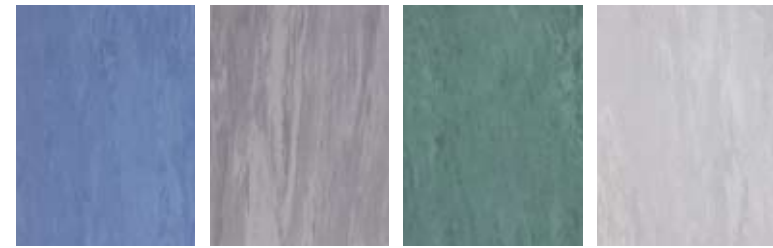
Acciaio



Tela di lino    Quadro    Grana di riso    Satinato

### Pavimenti

Vinilico

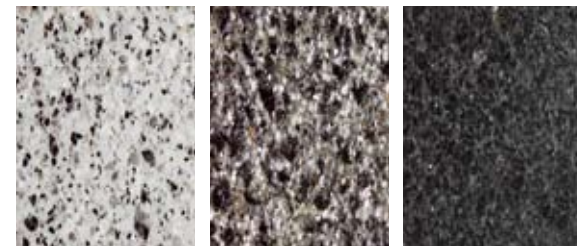


Cod. V540    Cod. V543    Cod. V544    Cod. V547



Cod. V549    Cod. V555

Marmo



"Granit" bianco titanio    "Granit" diorite    "Granit" grigio Sempione



## Pulsantiere



Pulsante tondo    Pulsante ovale    Pulsante quadro

## Display



D01    D02    D03

## CABINA MOD. TORRI



Pulsantiera a colonna

## Corrimano

In legno



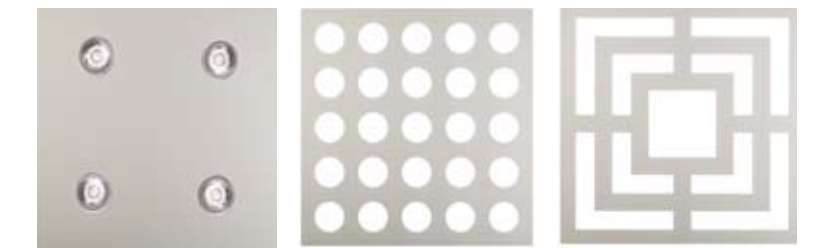
L-tondo 01    L-tondo 02    L-tondo 03

In acciaio

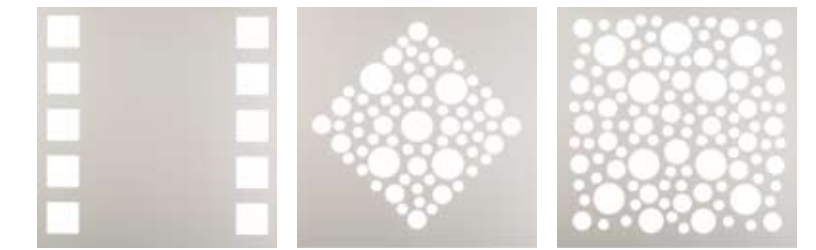


Acciaio fascia    Lucido tondo    Satinato tondo

## Illuminazione



Cielino 001    Cielino 002    Cielino 003



Cielino 004    Cielino 005    Cielino 006